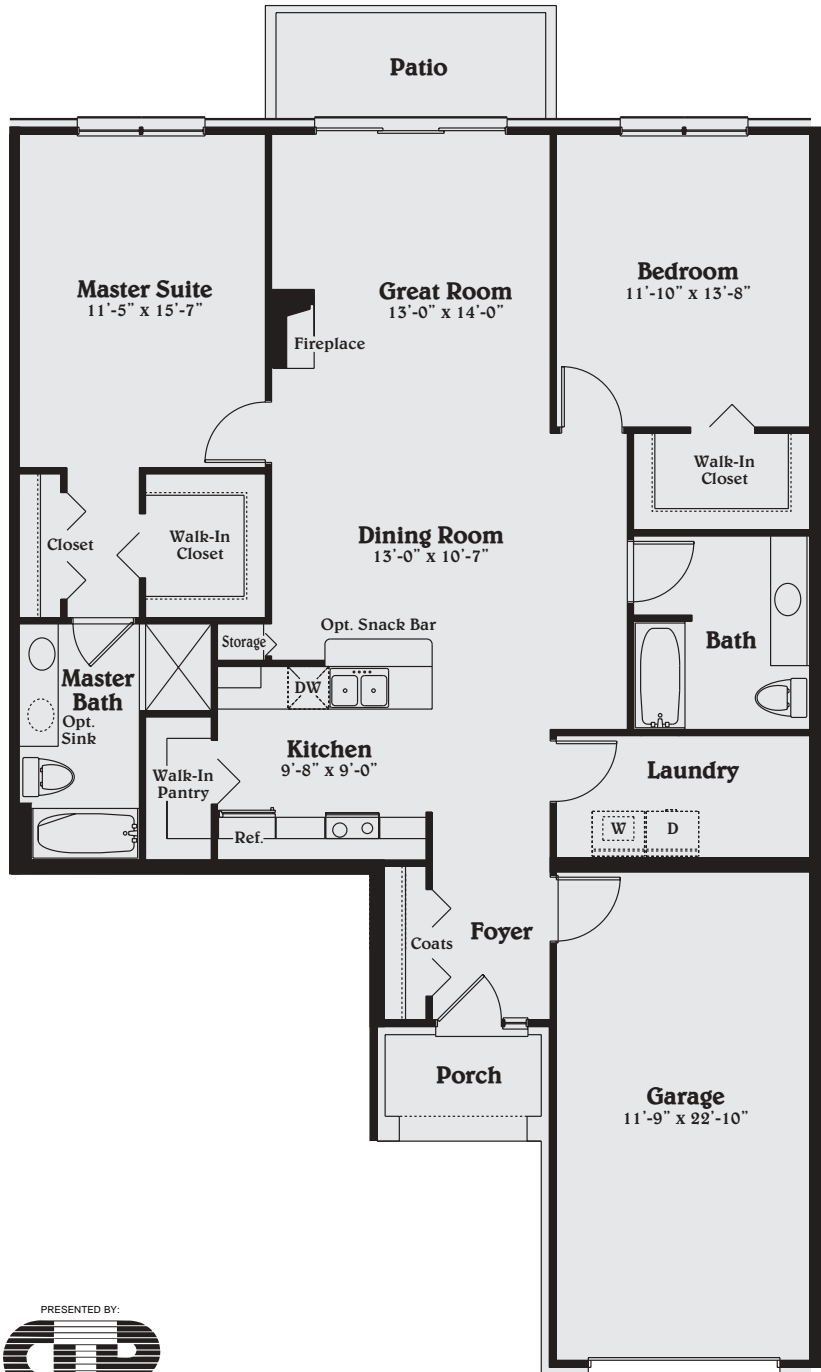


The Avon

Unit 101



Homeowners will appreciate both the flexibility and functionality designed into this 2 bedroom, 2 bath condominium. An inviting porch opens into a foyer with guest closet leading directly to the dining room and great room, which features a cozy fireplace and sliding doors to your own private patio. A centrally located kitchen offers a walk-in pantry to expand storage space and optional snack bar. The luxurious master suite includes a generous walk-in closet and full bath with an optional double sink vanity. A walk-in closet and bath adjacent to the second bedroom makes it perfect for overnight guests. Additional thoughtful amenities include a spacious laundry room and attached garage.

Wellington
PLACE

586-716-4400 Fax 586-716-4781

Located on 23 Mile Rd. just east of Baker Rd. in Chesterfield Twp.

Prices, plans and specifications subject to change without notice or obligation.

Floor plan dimensions are approximate. © 2004

www.gtrcompanies.com